

Wing40

Motorised swing turnstiles

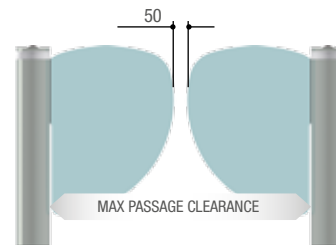
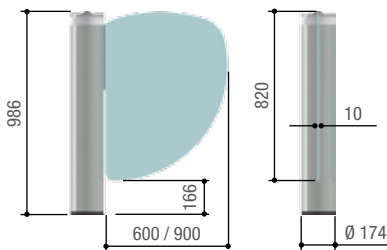


Elegant design, fast opening, with easy and safe installation



- The leaf secured inside the automation makes the lines extremely harmonious and simple.
- Built-in luminous crown, with modular assembly, warns of leaf movement and operating status.
- The control board, the power supply and the electric brake are inside the automation.
- The built-in electric brake blocks the leaf, allowing access to authorised users only.
- The motor with encoder enables easy management of the slowdown and obstacle detection stages.
- The programming and function display screen is located in an easily accessible place.
- Movement activation, via transponder card, magnetic card, buttons or photocells.
- Memory Roll for saving configurations and users.
- AISI 304 steel structure with plexiglas and tempered glass leaf.
- The speed of the leaf can be adjusted directly from the control board.

Dimensions (mm)



Limits to use

MODEL	PSWNG40
Leaf length (mm)	600 / 900
Min/max width of passage clearance (mm)	1,250 / 1,850
Max gate-leaf opening (°)	90

Technical features

MODEL	PSWNG40
Protection rating (IP)	40
Power supply (V - 50/60 Hz)	120 - 230 AC
Motor power supply (V)	24 DC
90° opening speed (s)	1
Power (W)	120
Operating temperature (°C)	-20 ÷ +55

● 24 V DC

THE COMPLETE RANGE



Code	Description	Price £ (Excl. VAT)
------	-------------	------------------------

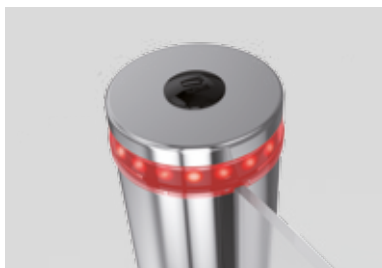
24 V DC motorized swing turnstile

001PSWNG40	Bidirectional motorised swing turnstile, in AISI 304 steel, featuring control board and signalling LEDs.	£2,249.00
------------	--	-----------



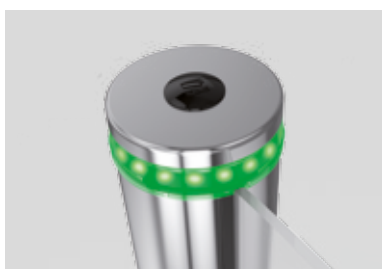
Accessories

001PSWL60	Plexiglass leaf (L = 600 mm, thickness = 10 mm).	£341.00
001PSWL90	Plexiglass leaf (L = 900 mm, thickness = 10 mm).	£421.00
001PSWL60C	Glass leaf (L = 600 mm, thickness = 10 mm).	£721.00
001PSWL90C	Glass leaf (L = 900 mm, thickness = 10 mm).	£751.00



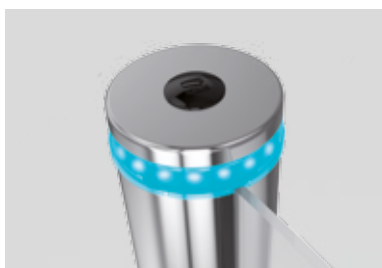
RED SIGNALLING LUMINOUS CROWN

It signals that the leaf is closing.



GREEN SIGNALLING LUMINOUS CROWN

It signals that the leaf is opening.



BLUE SIGNALLING LUMINOUS CROWN

It signals that the leaf is about to close.



THE CONTROL BOARD

Featuring a display that is built-in to the automation, enabling fast, easy function control.