

AA' section

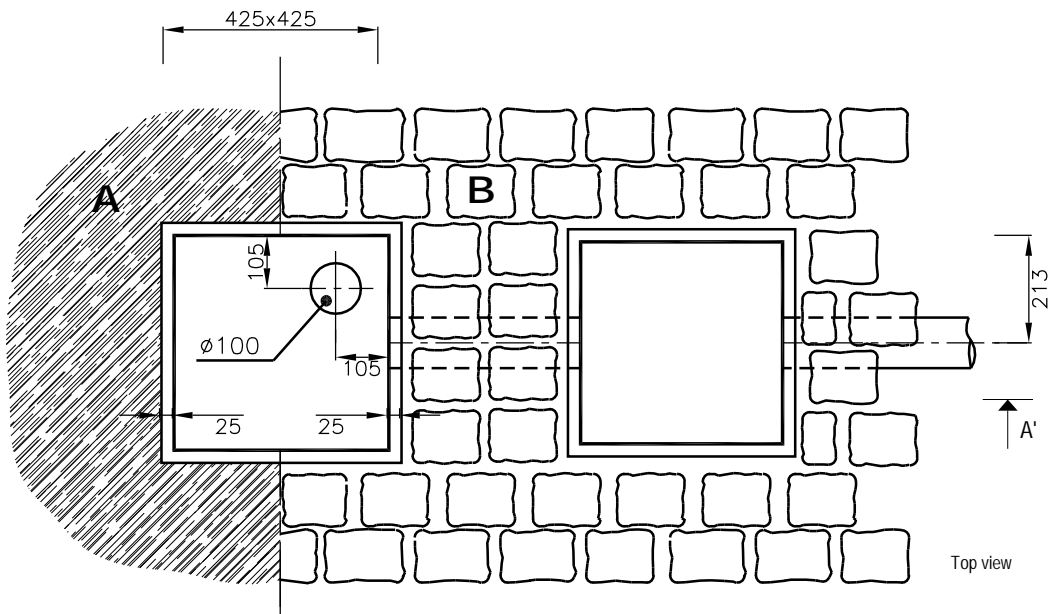
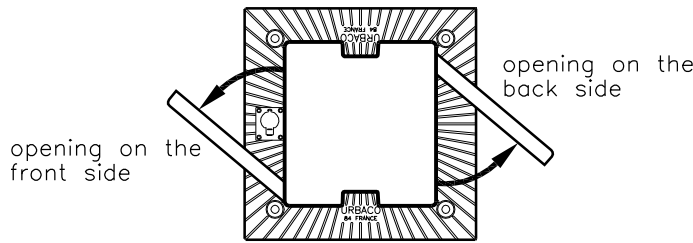
LEGENDE :

- 1 - Retractable bollard
- 2 - Casing
- 3 - Casing rib
- 4 - Conduit inlet \varnothing 100 mm / 4" on right or left hand side or lost casing (for automatic retractable bollard)
- 5 - PVC conduit \varnothing 100 mm / 4"
- 6 - Reinforced concrete base : should withstand the weight of vehicles driving over the bollard
- 7 - Geotextile underlayer

- A - Asphalt surface
- B - Paved surface
- C - 3000 PSI or 350 to 400 kg / m³ concrete.
- D - Drain : up to 20 liters / 5 gallons of water drained off in 5'. Stones should be contained in geotextile.
- E - Natural permeable soil for drainage (otherwise, PVC conduit should be connected to rainwater or sewage pipes)

NOTE :

- I Mechanical retractable bollards should be installed away from wheel tracks to avoid excessive wear of paint and locking mechanism.
- I Measurements subject to 3 % tolerance.



Top view

Copy or reproduction prohibited - Creation of URBACO

We reserve the right to change specifications at any time due to our commitment to innovation and safety

D	Product designation : CASING PLAN FOR BORDE	Date : 05/11/02	Scale : 1/15	Standard note : Any modification made to this (these) drawing(s) should IMPERATIVELY be VALIDATED by RESEARCH DEPARTEMENT. Do not measure unmarked dimensions from the plan.	
C	Product reference :	Material :	1/1		
B	Item reference : BO COF F 0700 (2)	Weight :	Document reference : OBEPCS-BOCOFF0700 (2)		
A	File reference : OBEPCS-BOCOFF0700 (2)	Quantity :			