



**CONTROLLER 8633 B
And extension 8633 AS**

ANNEXE II: Functional diagram

Appendix II: Functional diagram

This document is an appendix of the user's manual for the controller Ref: 8633 B. It represents a description of the 15 programs that describe the functioning of the controller Ref. 8633 B. (or of the controller Ref. 8633 AS). This document it is also available electronically as a PDF file.

A2.1 Automatic functioning: (readout: "AUTO. FUNCT.")

Configuration n°1: With upper/lower limit switch: (readout message: "upper/lower limit switch. Yes"). With two permanent light signals: (readout message: "permanent light signals").

Configuration n°2: With lower limit switch: (readout message: "upper/lower limit switch. Yes"). With blinker: (readout message: "blinker").

Configuration n°3: With lower limit switch: (readout message: "lower limit switch. Yes"). With permanent light signals: (readout message: "permanent light signal").

Configuration n°4: With lower limit switch: (readout message: "lower limit switch. Yes"). With blinker: (readout message: "blinker").

Configuration n°5: With upper and lower limit switch: (readout message: "upper/lower limit switch. No").

A2.2 Manual functioning: (readout message: "manual funct.")

Configuration n°6: With upper/lower limit switch: (readout message: "upper/lower limit switch. Yes"). With two permanent light signals: (readout message: "permanent light signals").

Configuration n°7: With lower limit switch: (readout message: "upper/lower limit switch. Yes"). With blinker: (readout message: "blinker").

Configuration n°8: With lower limit switch: (readout message: "lower limit switch. Yes"). With permanent light signals: (readout message: "permanent light signal").

Configuration n°9: With lower limit switch: (readout message: "lower limit switch. Yes"). With blinker: (readout message: "blinker").

Configuration n°10: With upper and lower limit switch: (readout message: "upper/lower limit switch. No").

A2.3 Functioning without loops: (readout: "without loops functioning")

Configuration n°11: With upper/lower limit switch (readout message: "upper/lower limit switch. Yes) with two permanent light signals (readout message: "permanent light signals").

Configuration n°12: with lower limit switch (readout message: "upper/lower limit switch. Yes") with blinker (readout message: "blinker").

Configuration n°13: with lower limit switch (readout message: "lower limit switch. Yes") with permanent light signals (readout message: "permanent light signal").

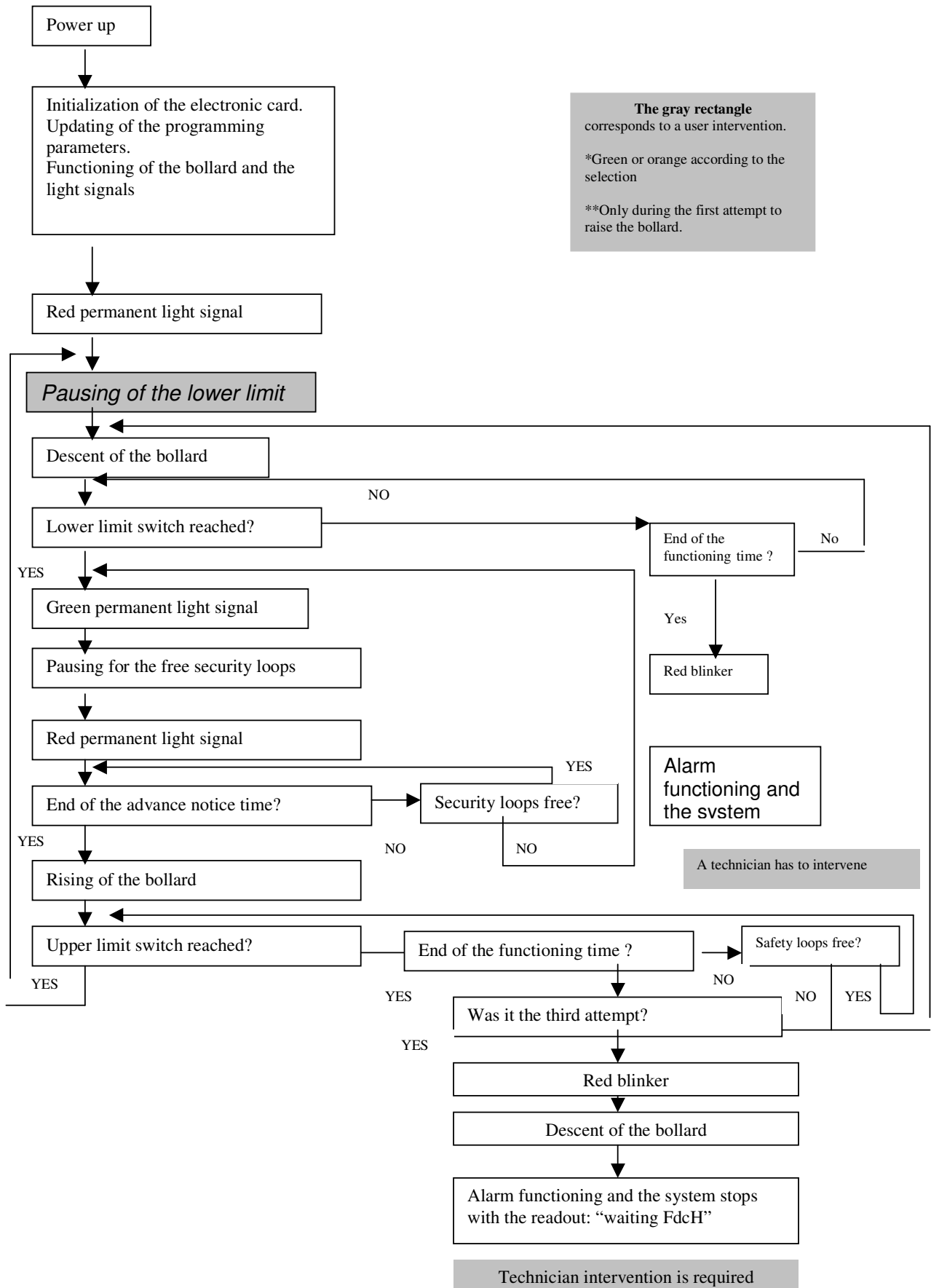
Configuration n°14: With lower limit switch: (readout message: "lower limit switch. Yes"). With blinker: (readout message: "blinker").

Configuration n°15: With upper and lower limit switch: (readout message: "upper/lower limit switch. No").

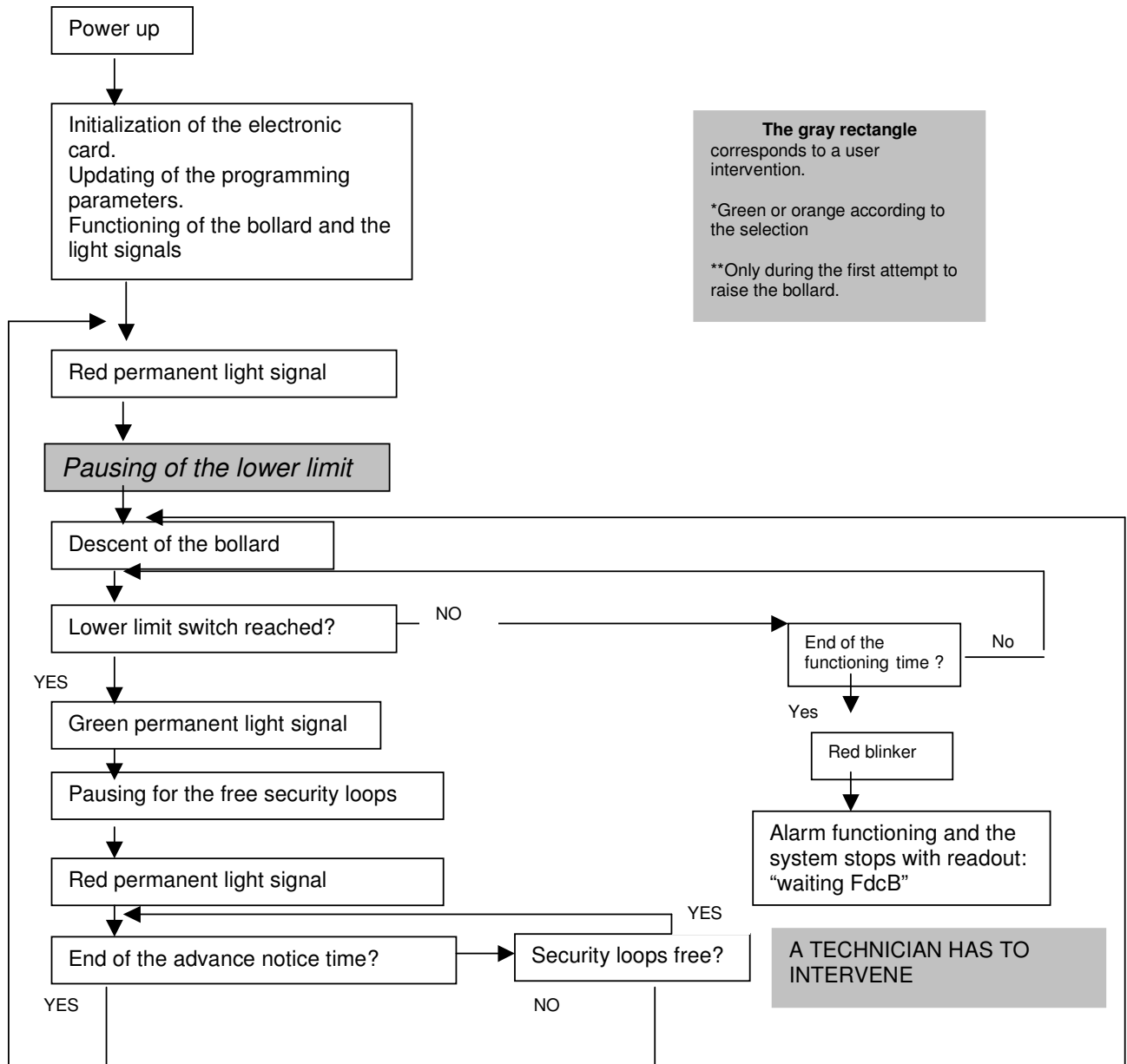
Controllers Ref. 8633B and 8633AS

Flow chart that describes a cycle.

Configuration n°1: automatic, with upper and lower limit switch, fixed light signals.



Controllers Ref. 8633B and 8633AS
 Flow chart that describes a cycle.
 Configuration n°4: automatic, with upper and lower limit switch, blinkers.



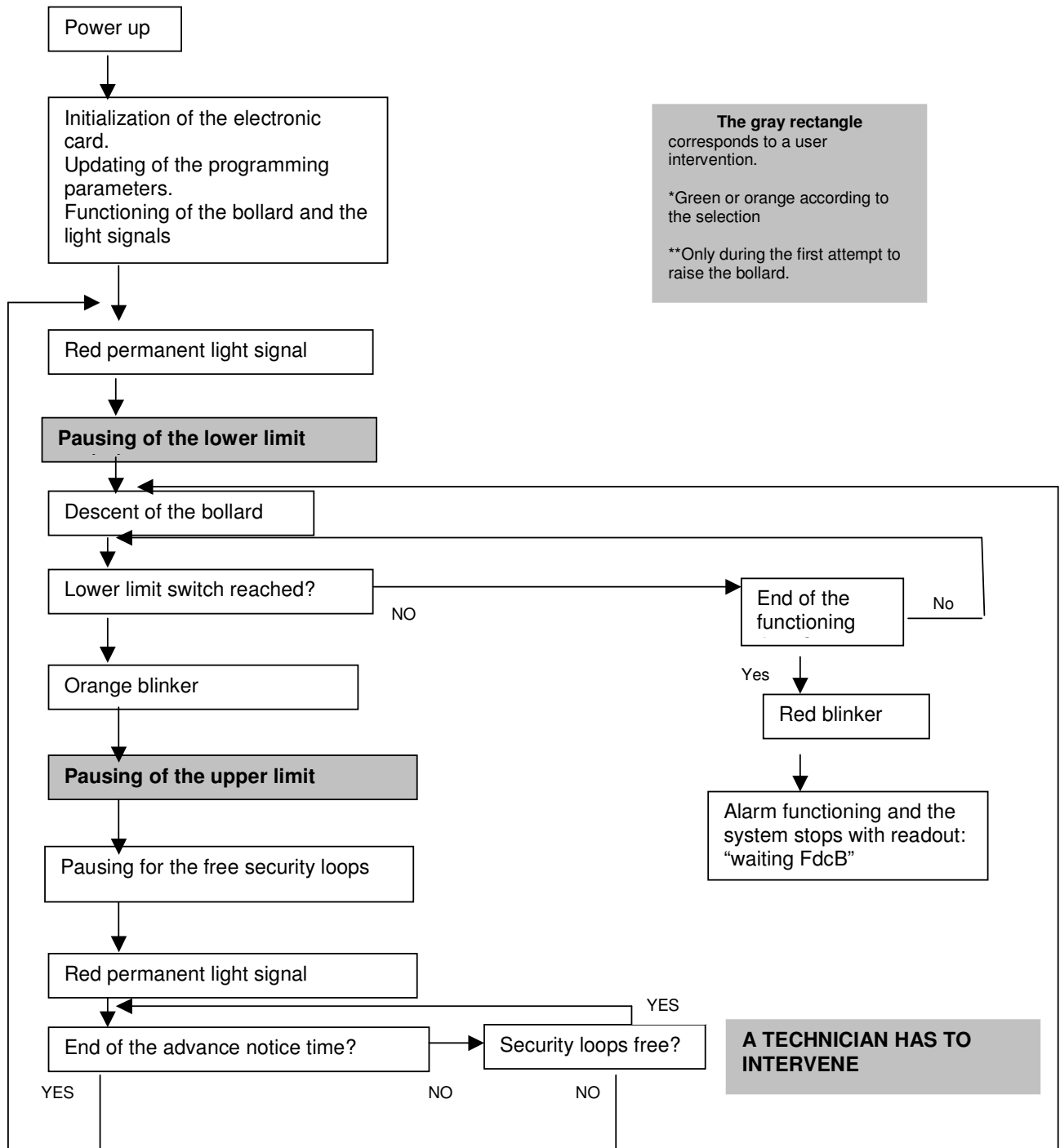
The gray rectangle
 corresponds to a user
 intervention.

*Green or orange according to
 the selection

**Only during the first attempt to
 raise the bollard.

A TECHNICIAN HAS TO INTERVENE

Controllers Ref. 8633B and 8633AS
 Flow chart that describes a cycle.
 Configuration n°9: manual, with upper and lower limit switch, blinkers.



The gray rectangle
 corresponds to a user
 intervention.

*Green or orange according to
 the selection

**Only during the first attempt to
 raise the bollard.

A TECHNICIAN HAS TO INTERVENE