



CE DTA 01- DTA 02

INSTALLATION MANUAL

COMMUNICATION SYSTEM

FOR SAFETY SENSITIVE EDGES



119RT87

"IMPORTANT INSTRUCTIONS FOR SAFE INSTALLATION"
WARNING: IMPROPER INSTALLATION MAY CAUSE SERIOUS DAMAGE. FOLLOW ALL INSTALLATION INSTRUCTIONS.
THIS MANUAL IS INTENDED ONLY FOR PROFESSIONAL INSTALLERS OR QUALIFIED PERSONNEL

Legend



This symbol refers to sections to be read carefully.



This symbol refers to sections concerning safety.



This symbol refers to notes to be communicated to users.

Reference to Regulations

The following standards have been complied with for the product:
EN 12978, UNI EN 954-1, CEI EN 60335-1, UNI EN 12453

Device Description

Wholly designed and built by CAME Cancelli Automatici S.p.A.

Guaranteed 24 months if not tampered with.

Intended for BZ-BX-BX series automation systems.

Infrared protection device composed of:

- Battery-powered transmitter with dip-switches for function selection.
- 24V AC/DC receivers (DTA01 with interlocked relay contact, with single outlet), (DTA02, with double outlet), with connections available for testing operations. 2 active channel LED indicators, 2 dead battery LED indicators.
- Maximum distance transmitter/receiver: 10 m

Technical Characteristics

Transmitter

Power: 6 V (four 1.5V AAA batteries)

Absorption: 70 μ A

Degree of protection: IP54

Material: PC-ABS UL94V0 / Polycarbonate / TPA1 65 NT Marpram mar

Working temperature



Receiver

Power: 12/ 24 V A.C. - D.C.

Absorption: 48 mA

Degree of protection: IP54

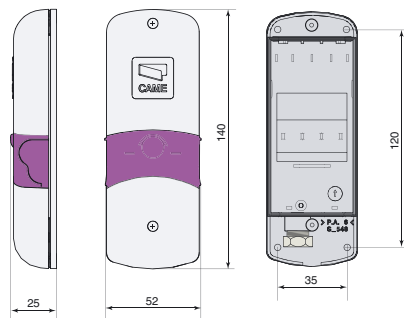
Material: PC-ABS UL94V0 / Polycarbonate / TPA1 65 NT Marpram mar

Working temperature:

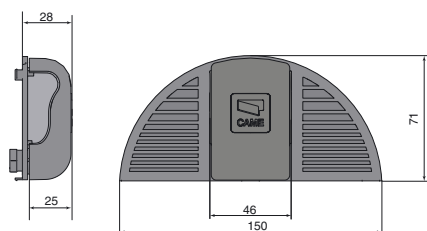


Dimensions and Hole Measurements

Transmitter



Receiver



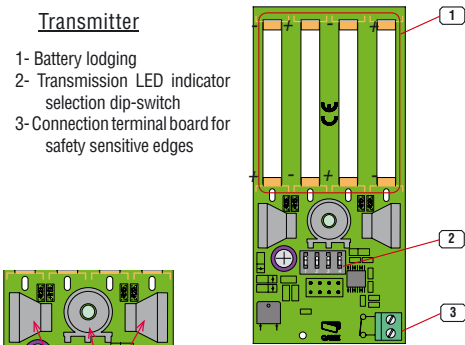
Installation

- ⚠** Before proceeding with the installation, it is necessary to:
- make sure that the mains power is off.
 - Check that the product is installed in an area protected from bumps and that the anchorage surface is solid, and that it is secured with suitable elements (screws, inserts, etc).
 - Install suitable tubes and ducts for electric cable passage to guarantee protection against mechanical damage.

Description/Electric Connections and Dip-switch functions

Transmitter

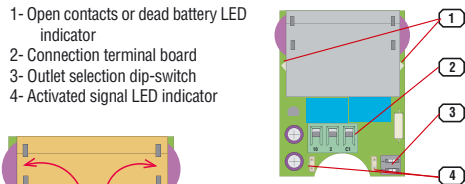
- 1- Battery lodging
- 2- Transmission LED indicator selection dip-switch
- 3- Connection terminal board for safety sensitive edges



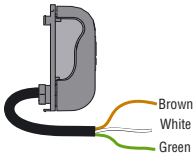
Dip-switch functions
 Dip-switch 1 set at ON = photo diode 1 is active
 Dip-switch 2 set at ON = photo diode 2 is active
 Dip-switch 3 set at ON = photo diode 3 is active
 Dip-switch 4 set at ON = must be set to ON

DTA 01 Single Outlet Receiver

- 1- Open contacts or dead battery LED indicator
- 2- Connection terminal board
- 3- Outlet selection dip-switch
- 4- Activated signal LED indicator

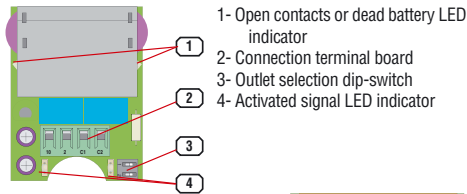


Dip-switch function
 Dip-switch 1 set at ON = photo diode 1 is active
 Dip-switch 2 set at ON = photo diode 2 is active
 A single function may be assigned even if there are two safety sensitive edges



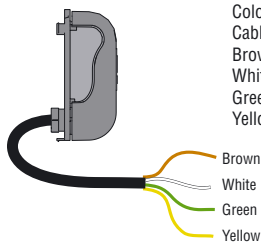
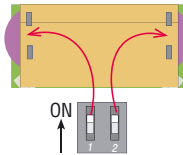
Colour codes Cables-contacts
 Brown = 10
 White = 2
 Green = C1/C2/C3/C4

DTA 02 Double Outlet Receiver



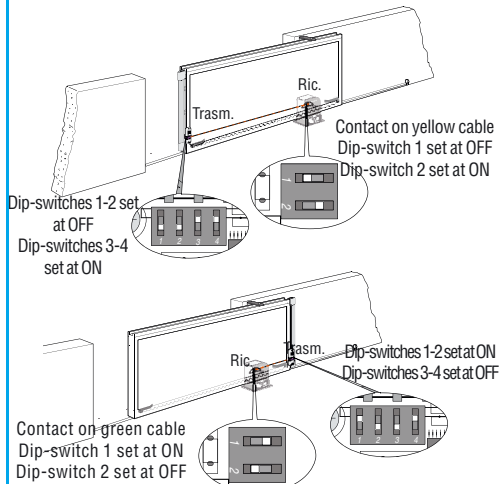
- 1- Open contacts or dead battery LED indicator
- 2- Connection terminal board
- 3- Outlet selection dip-switch
- 4- Activated signal LED indicator

Dip-switch function
 Dip-switch 1 ON = photo diode 1 is active
 Dip-switch 2 ON = photo diode 2 is active
 Different functions can be assigned to the two safety sensitive edges



Colour codes Cables-contacts
 Brown = 10
 White = 2
 Green = C1/C2/C3/C4
 Yellow = C1/C2/C3/C4

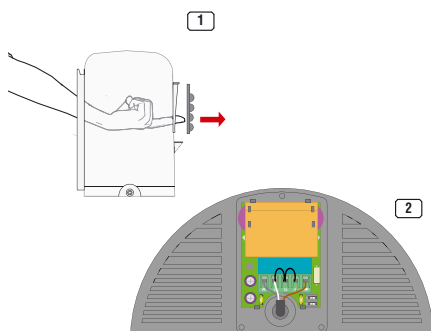
Example.



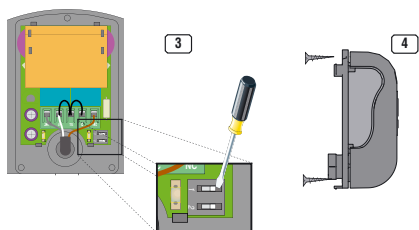
Note: should the door close toward the left, invert the two examples illustrated above.

Receiver Installation

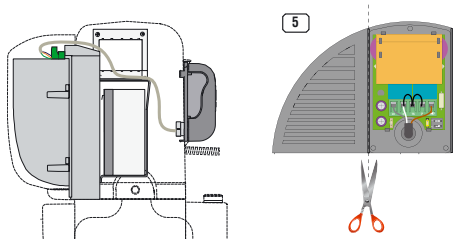
Remove the plastic motor cover, press the aeration grill from the inside of the cover in order to dislodge it from the place it was originally mounted, as shown in figure 1.
Open the Receiver board as shown in figure 2



Use the dip-switches to select which photo diode to use, as shown in figure 3.
Close the receiver board with the relevant shell and secure with the screws provided as shown in figure 4.

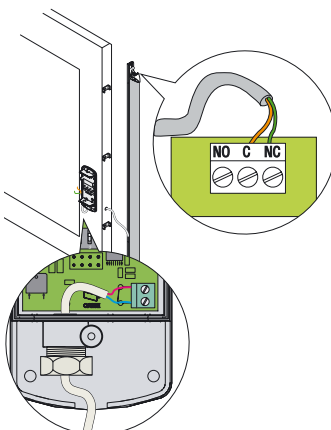


Take the cable already connected to the Receiver and place the semicircular plate with the Receiver where the aeration grid was located, hooking it to the automatic system's case, and then connect the cable to the terminal board as instructed in column 4. For BZ series automatic systems, cut off the side wings as shown in figure 5

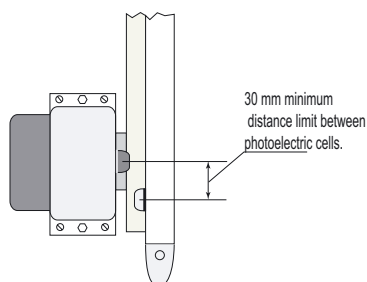
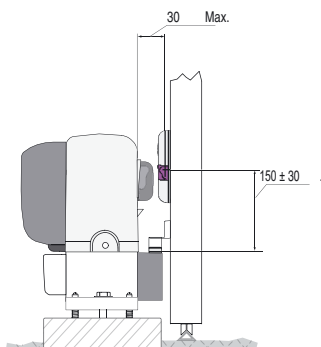


Transmitter Installation

Connect the safety sensitive edge as per the instructions in the package. N.B. the transmitter should be connected to the safety sensitive edge with contact C.- N.C



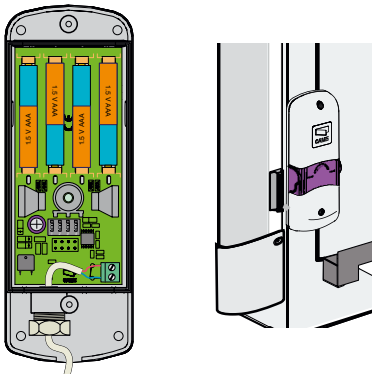
Before proceeding with the installation of the transmitter, make sure the distance between the two photoelectric cells are the same as the measurements shown in the following figures.



Secure the bottom of the transmitter using screws suitable to the gate's structure (max. Ø 4 mm), choose the point where the cable should go through, either making a hole in the bottom of the Receiver and the gate door or have it go through along the side, making a hole on the edge of the transmitter's cover and then passing it through the hollows of the sensitive edge's mounting bracket.

Once connected, select the photo diode and set dip-switch 4 to ON, and insert the batteries (four 1.5V AAA batteries), making sure the polarity corresponds to the position instructed in the card.

Close the transmitter with the screws provided



Malfunction

- The two LED indicators flashing on the Receiver mean transmitter dead batteries.
- The two LED indicators giving off steady light on the Receiver means that the signal has been interrupted, that there is a transmitter malfunction or that the system has been activated following the installation of the sensitive edge.

Demolition and Disposal

PRODUCT DISPOSAL – Our products and packaging are made up of various types of materials. Most of them (paper, plastics, etc.) may be disposed of in normal garbage collection bins and can be recycled by disposing of in specific recyclable material collection bins and disposal in authorized centres.

Batteries and any other materials containing hazardous substances, however, should be removed and given to qualified service companies for proper disposal.

Prior to disposal, it is always advisable to check specific regulations in force in the place of disposal.

PLEASE DISPOSE OF PROPERLY!

Manufacturer's declaration

CE Declaration of conformity

la CAME Cancelli Automatici S.p.A.
 via Martiri della Libertà, 15
 31030 Dosson di Casier - Treviso - ITALY
 tel (+39) 0422 4940 - fax (+39) 0422 4941
 internet: www.came.it - e-mail: info@came.it

Declare under their own responsibility that the following products for gate and garage door automation called:

DTA01- DTA02

Are compliant with essential requirements and with pertinent regulations established by the following directives and to the applicable parts of the standards listed below:
 Electromagnetic compatibility directive 89/336/EEC - 92/31/EEC
 Electrical equipment designed for use within certain voltage limits directive 73/23/EEC - 93/68/EEC
 Machinery directive 98/37/EC
 EN 61000-6-2
 EN 61000-6-3
 EN 12978
 EN 60529
 EN 954-1

*L'amministratore delegato
 Sig. Andrea Menuzzo*



CAME CANCELLI AUTOMATICI S.p.A.
 VIA MARTIRI DELLA LIBERTÀ 15
 31030 DOSSON DI CASIER - TV - ITALY
 www.came.it

Per assistenza e informazioni tecniche

